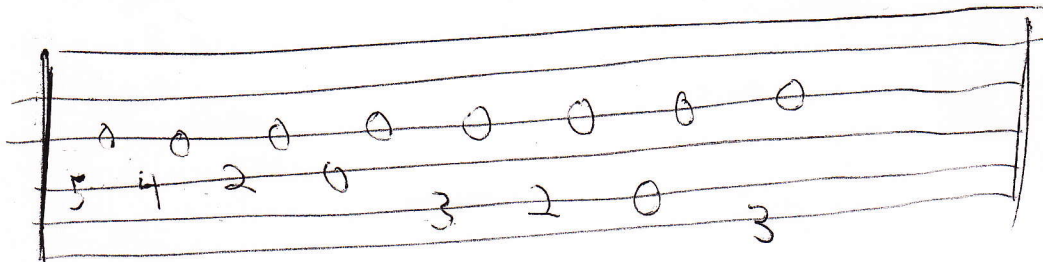


CAPO 4 → G

# ALL I NEED

BETHANY DILLON

I



G C<sub>2</sub> C<sub>2</sub>/A C<sub>2</sub> | G C<sub>2</sub> C<sub>2</sub>/A C<sub>2</sub>

VS G C<sub>2</sub> C<sub>2</sub>/A C<sub>2</sub> | G C<sub>2</sub> C<sub>2</sub>/A C<sub>2</sub> | G C<sub>2</sub> C<sub>2</sub>/A C<sub>2</sub> | G C<sub>2</sub> C<sub>2</sub>/A C<sub>2</sub>

G C<sub>2</sub> | G/E D | G C<sub>2</sub> | G/E D | G C<sub>2</sub> | G/E D | G C<sub>2</sub> | G/E D

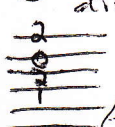
CH G C<sub>2</sub> | G/E D | G C<sub>2</sub> | G/E D | G A | Am D

TA G C<sub>2</sub> | G/E D | G C<sub>2</sub> | G/E D

VS G C<sub>2</sub> | G/E D | G C<sub>2</sub> | G/E D | G C<sub>2</sub> | G/E D | G C<sub>2</sub> | G/E D

CH G C<sub>2</sub> | G/E D | G C<sub>2</sub> | G/E D | G A | Am D | G C<sub>2</sub> | C<sub>2</sub>

BR D D#<sub>dim</sub> | G/E C<sub>2</sub> | C<sub>2</sub>



CH new G C<sub>2</sub> | G/E D | G C<sub>2</sub> | G/E D | G A | Am D

OUT G C<sub>2</sub> | G/E D | G C<sub>2</sub> | G/E D | G C<sub>2</sub>